



KELEMER BROTHERS

WINDOWS | DOORS | SIDING

Since 1999

Introducing the

Genesis Window by Vytex



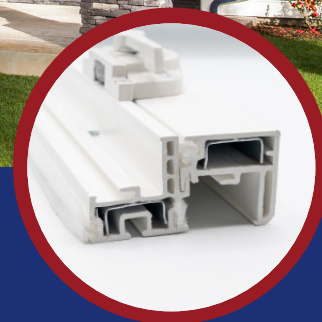
WELDED CORNERS

Made from a specially formulated PVC, our welded sash and frame offers superior strength and durability, with a DP R-40 Rating — 164 mph wind load (170% stronger than industry standards.)



INSULATED FRAME & SASH

Our insulated frame and sash offer superior insulating and noise reducing capabilities and ensure the long-term durability and performance of your windows.



METAL REINFORCEMENTS

Our metal reinforcement meeting rails guarantee strength and durability in your windows. Plus, it keeps the windows straight so they interlock nicely.






OPTIONAL TRIPLE SILVER LOE™ — OFFERING SUPERIOR COMFORT & PERFORMANCE

Our Triple Silver LoE™ glass delivers the ideal balance of solar control and high visibility, providing the highest levels of year-round comfort and energy savings, making it the perfect glass no matter where you live. The dramatic comfort improvement from windows with warm glass surfaces also means the relative humidity of the indoor air can be controlled and maintained properly. Proper humidity levels will improve comfort and promote a healthier living environment.



SUPERIOR AIR INFILTRATION

The Genesis Window incorporates features like welded frames and sash, triple-fin weatherstripping and more. These important defenses are necessary to stop air from entering your home. Our windows reduce air infiltration 5x better than wood windows and 3x better than other high-performance vinyl windows. With a rating of **.04** air infiltration (industry standards are .30) our window reigns superior. Maintain comfort in your home and reduce your energy costs with the Genesis Window.

| | INDUSTRY STANDARD | TRADITIONAL WOOD DOUBLE HUNG WINDOWS | TRADITIONAL VINYL HIGH-PERFORMANCE, DOUBLE HUNG | GENESIS WINDOW |
|--|---|--|--|--|
| 1 CFM OF AIR LEAKAGE PER MINUTE | .30 CFM OF AIR LEAKAGE PER MINUTE | .23 CFM OF AIR LEAKAGE PER MINUTE | .15 CFM OF AIR LEAKAGE PER MINUTE | .04 CFM OF AIR LEAKAGE PER MINUTE |
|  7.5 GALLONS OF AIR PER MINUTE |  2.25 GALLONS OF AIR PER MINUTE |  1.725 GALLONS OF AIR PER MINUTE |  1.125 GALLONS OF AIR PER MINUTE |  .22 GALLONS OF AIR PER MINUTE |




DURALITE® SYSTEM

Our Duralite® spacer system uses warm-edge technology to help block heat's escape path and provide exceptional thermal performance in your home. Other benefits of the Duralite® spacer system include reduced condensation and more comfortable humidity levels inside your home. The FGI* tests don't lie – Duralite® outperforms all other spacer systems!


* Fenestration and Glazing Industry Alliance.

AVAILABLE GLASS PACKAGES

| | |
|--|-----------------------------|
|  VYTEX CORPORATION VINYL FRAME (8901-DH) DUAL GLAZE - ARGON - LOWE VERTICAL SLIDER WINDOW VYW-A-64-00021-00001 | |
| ENERGY PERFORMANCE RATING | |
| U-Factor (U.S./I-P) | Solar Heat Gain Coefficient |
| 0.27 | 0.29 |
| ADDITIONAL PERFORMANCE RATINGS | |
| Visible Transmittance | Air Leakage (U.S./I-P) |
| 0.54 | ≤0.3 |


ENERGY SAVER PLUS™

- Double-paned with one pane of high-performance Low-E glass
- Argon gas-filled insulated glass unit
- VyFoam™ insulated frame and sash
- Duralite® Warm Edge Spacer System

| | |
|--|-----------------------------|
|  VYTEX CORPORATION VINYL FRAME (8901-DH) DUAL GLAZE - ARGON - LOWE TRIPLE SILVER VERTICAL SLIDER WINDOW VYW-A-64-00022-00001 | |
| ENERGY PERFORMANCE RATING | |
| U-Factor (U.S./I-P) | Solar Heat Gain Coefficient |
| 0.27 | 0.21 |
| ADDITIONAL PERFORMANCE RATINGS | |
| Visible Transmittance | Air Leakage (U.S./I-P) |
| 0.50 | ≤0.3 |

TripleSilverLoE™

- Double-paned with one pane of high-performance TripleSilverLoE™ glass
- Argon gas-filled insulated glass unit
- VyFoam™ insulated frame and sash
- Duralite® Warm Edge Spacer System

| | |
|--|-----------------------------|
|  VYTEX CORPORATION VINYL FRAME (8901-DH) DUAL GLAZE - ARGON - RS DUAL LOWE VERTICAL SLIDER WINDOW VYW-A-64-00023-00001 | |
| ENERGY PERFORMANCE RATING | |
| U-Factor (U.S./I-P) | Solar Heat Gain Coefficient |
| 0.23 | 0.28 |
| ADDITIONAL PERFORMANCE RATINGS | |
| Visible Transmittance | Air Leakage (U.S./I-P) |
| 0.53 | ≤0.3 |

ENERGY SAVER R5™

- Double-paned with one pane of high-performance Low-E glass and one pane of high-performance 4th surface Low-E glass
- Argon gas-filled insulated glass unit
- VyFoam™ insulated frame and sash
- Duralite® Warm Edge Spacer System

*All values shown above are for double-hung windows without grids.

BUILDING COMMUNITY ONE WINDOW AT A TIME

Kelemer Brothers is a family business with a family values approach for over 20 Years.

We offer quality, style and cost saving replacement windows.

An Angie's List Super Service Award winner 10 years in a row.

No salespeople. No pressure - owners Gabriel or Joe Kelemer will personally meet with you.

If you want a company that will take great care of you with 97% A's, then give us a call at (410) 299-0038.



Proudly Serving
Maryland, D.C., & Virginia

(410) 299-0038

info@kelemerbrothers.com

www.kelemerbrothers.com

